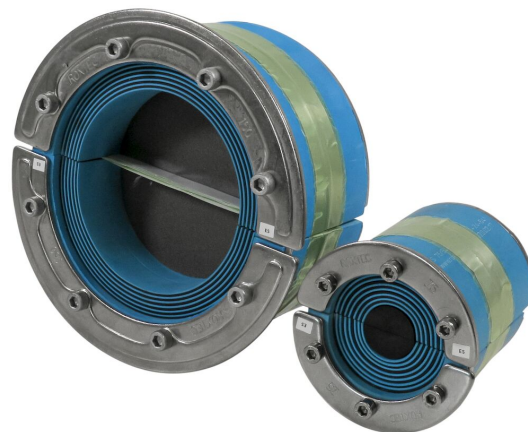




Roxtec RS EMC-tætning

EMC-tætning for gennemføring til et enkelt kabel eller rør.

Roxtec RS EMC er en tætning, der sikrer elektromagnetisk kompatibilitet for enkeltkabler eller -rør i metalsleeves. Gennemføringen har to halvdele med aftagelige lag, så den kan tilpasses kabler og rør af forskellig størrelse. Man kan vælge mellem ES-versioner for elektromagnetisk afskærmning og PE-versioner, der beskytter mod elektrisk ledede forstyrrelser. Udformningen på tætningen gør, at den er nem at montere omkring eksisterende kabler eller rør. Brug Roxtecs EC spændingstester til at få en indikation af den elektriske ydeevne for installationer udført med Roxtec BG™ eller ES.



- Gnaverbekæmpende
- Hurtig og nem at montere

Produktgenskaber



Brandklassificeret



Vandtæt



Gastæt



EMI-beskyttelse

Byggekonstruktion



Metal

Monteringstype



Oprindeligt sleeve

Normeringer og certifikater

Brand

- A-KLASSE i henhold til IMO 2010 FTP-kode
- E/EI-klassificering i henhold til EN 13501
- F/T-klassificering i henhold til UL 1479
- H-KLASSE i henhold til IMO 2010 FTP-kode + HC-brandbelastningskurve
- Jetfire i henhold til ISO 22899-1 og OTI 95634

Tæthed

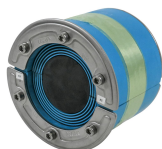
- Gas: 2,67 bar (katastrofe)
- Vand: 4 bar (katastrofe)

Understøtter

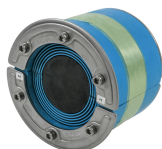
- Elektromagnetisk skærmning
- Potentialudligning

Data om tætningskomponenter

Tætningskomponenter



RS ES-tætning



RS PE-tætning



Lubrikant

Tilbehør



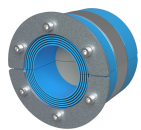
tilbehør ES og BG

For mere information, besøg venligst [roxtec.com](https://www.roxtec.com).

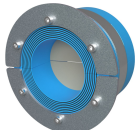


Foreslåede tætningskit

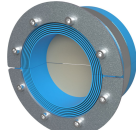
mm/kg



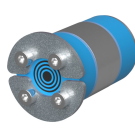
RS 100 ES AISI316
WOC



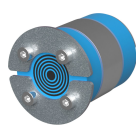
RS 125 ES AISI316 WOC



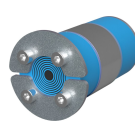
RS 150 ES AISI316 WOC



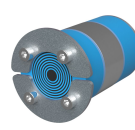
RS 25 ES AISI316



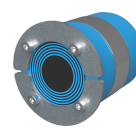
RS 31 ES AISI316



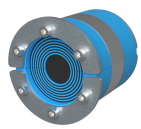
RS 43 ES AISI316



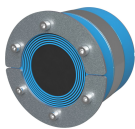
RS 50 ES AISI316



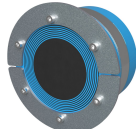
RS 68 ES AISI316



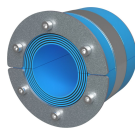
RS 75 ES AISI316



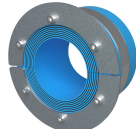
RS 100 ES AISI316



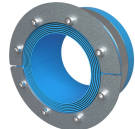
RS 125 ES AISI316



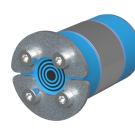
RS 100 PE AISI316
WOC



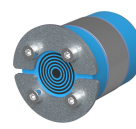
RS 125 PE AISI316 WOC



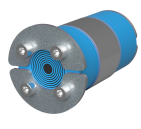
RS 150 PE AISI316 WOC



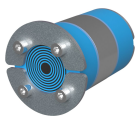
RS 25 PE AISI316



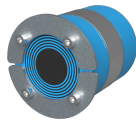
RS 31 PE AISI316



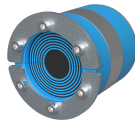
RS 43 PE AISI316



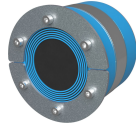
RS 50 PE AISI316



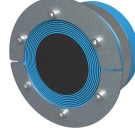
RS 68 PE AISI316



RS 75 PE AISI316



RS 100 PE AISI316



RS 125 PE AISI316

Title	Konfiguration	Åbningsmål Ø	Vægt	Art.-nr.
RS 100 ES AISI316 WOC	1x (48.0-70.0)	100 - 102	0.8	ERS0001001121
RS 125 ES AISI316 WOC	1x (66.0-98.0)	125 - 127	1.2	ERS0001251121
RS 150 ES AISI316 WOC	1x (93.0-119.0)	150 - 152	1.6	ERS0001501121
RS 25 ES AISI316	1x (3.6-12.0)	25 - 26	0.04	ERS0100251121
RS 31 ES AISI316	1x (4.0-17.0)	31 - 32	0.11	ERS0100311121
RS 43 ES AISI316	1x (4.0-23.0)	43 - 45	0.24	ERS0100431121
RS 50 ES AISI316	1x (8.0-30.0)	50 - 52	0.32	ERS0100501121
RS 68 ES AISI316	1x (26.0-48.0)	68 - 70	0.5	ERS0100681121
RS 75 ES AISI316	1x (24.0-54.0)	75 - 77	0.6	ERS0100751121
RS 100 ES AISI316	1x (48.0-70.0)	100 - 102	1	ERS0101001121
RS 125 ES AISI316	1x (66.0-98.0)	125 - 127	1.6	ERS0101251121
RS 100 PE AISI316 WOC	1x (48.0-70.0)	100 - 102	0.8	PRS0001001121
RS 125 PE AISI316 WOC	1x (66.0-98.0)	125 - 127	1.2	PRS0001251121
RS 150 PE AISI316 WOC	1x (93.0-119.0)	150 - 152	1.6	PRS0001501121
RS 25 PE AISI316	1x (3.6-12.0)	25 - 26	0.04	PRS0100251121
RS 31 PE AISI316	1x (4.0-17.0)	31 - 32	0.06	PRS0100311121
RS 43 PE AISI316	1x (4.0-23.0)	43 - 45	0.24	PRS0100431121
RS 50 PE AISI316	1x (8.0-30.0)	50 - 52	0.32	PRS0100501121
RS 68 PE AISI316	1x (26.0-48.0)	68 - 70	0.5	PRS0100681121
RS 75 PE AISI316	1x (24.0-54.0)	75 - 77	0.6	PRS0100751121
RS 100 PE AISI316	1x (48.0-70.0)	100 - 102	1	PRS0101001121
RS 125 PE AISI316	1x (66.0-98.0)	125 - 127	1.6	PRS0101251121



The product information provided by Roxtec does not release the purchaser of the Roxtec system, or part thereof, from the obligation to independently determine the suitability of the products for the intended process, installation and/or use.

Roxtec gives no guarantee for the Roxtec system or any part thereof and assumes no liability for any loss or damage whatsoever, whether direct, indirect, consequential, loss of profit or otherwise, occurred or caused by the Roxtec systems or installations containing components not manufactured by an authorized manufacturer and/or occurred or caused by the use of the Roxtec system in a manner or for an application other than for which the Roxtec system was designed or intended.

Roxtec expressly excludes any implied warranties of merchantability and fitness for a particular purpose and all other express or implied representations and warranties provided by statute or common law. User determines suitability of the Roxtec system for intended use and assumes all risk and liability in connection therewith. In no event shall Roxtec be liable for indirect, consequential, punitive, special, exemplary or incidental damages or losses.

The Roxtec products are offered and sold in accordance with the conditions of the Roxtec General Terms of Sales. The latest version of the Roxtec General Terms of Sales can be downloaded from <https://www.roxtec.com/en/about-us/about-roxtec/general-terms-of-sales/>

We reserve the right to make changes to the product and technical information without further notice. Any errors in print or entry are no claims for indemnity. The content of this publication is the property of Roxtec International AB and is protected by copyright.

This document was generated on: 2024-04-17